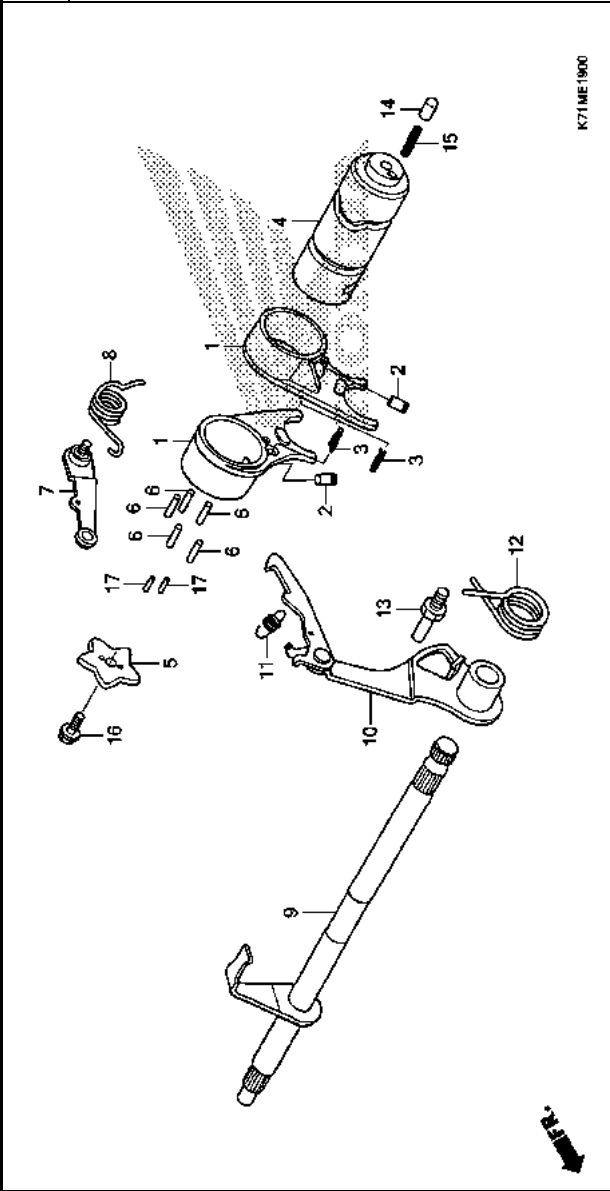


E-19

GEARSHIFT DRUM

Ref. No.	L.O.N.	(Relative ref. Number)	Description	F.R.T.
1	210112	(2,3)	FORK, GEARSHIFT -INCLUDES: Engine removal and installation	3.1
4	2101A9		-NOTE: Same time for two units DRUM, GEARSHIFT -INCLUDES: Engine removal and installation	3.1
5	2101D6		PLATE, GEARSHIFT DRUM STOPPER (8)	1.0
7	210125		STOPPER OR SPRING, SHIFT DRUM	1.0
9	210122		SPINDLE, GEARSHIFT (12)	1.1
10	210127		ARM, GEARSHIFT	1.1



Ref. No.	Part No.	Description	Serial No.		Parts catalogue code	
			AFS110	MD		
			Reqd.	QTY		
			MCS	L		
1	24211-KW-741	FORK, GEARSHIFT	2	2		
2	24261-121-742	PIN, GEARSHIFT FORK GUIDE	2	2		
3	24263-028-000	CLIP, GEARSHIFT FORK GUIDE PIN	2	2		
4	24301-KW-741	DRUM, GEARSHIFT	1	1		
5	24411-KW-740	PLATE, GEARSHIFT DRUM STOPPER	1	1		
6	24421-200-000	PIN, GEARSHIFT DRUM	5	5		
7	24430-GB4-772	ARM COMP., SHIFT DRUM STOPPER	1	1		
8	24435-KW-000	SPRING, SHIFT DRUM STOPPER	1	1		
9	24610-KW-740	SPINDLE COMP., GEARSHIFT	1	1		
10	24630-KMB-600	ARM COMP., GEARSHIFT	1	1		
11	24641-041-000	SPRING, GEARSHIFT ARM	1	1		
12	24651-041-000	SPRING, GEARSHIFT RETURN	1	1		
13	24652-KPH-900	PIN, SHIFT RETURN SPRING	1	1		
14	35751-KVL-V31	CAP, CHANGE SWITCH CONTACT	1	1		
15	35752-KPH-900	SPRING, CHANGE SWITCH CONTACT	1	1		
16	90071-171-010	BOLT, KNOCK, 6MM	1	1		
17	96220-30100	ROLLER, 3X10	2	2		